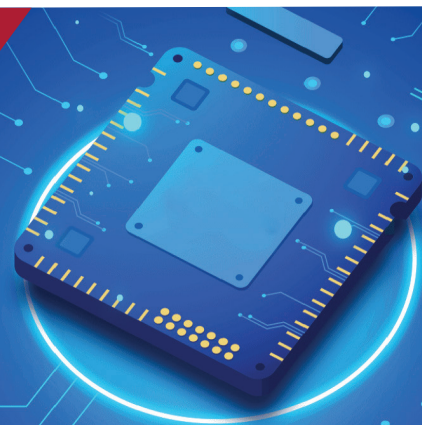


11ax 7800Mbps Ceiling Wireless AP NX-AP7800-C6



OVERVIEW

NX-AP7800-C6 is a tri-band 11ax Wi-Fi standard Qualcomm Chipset industrial Ceiling Wireless Access Point based on IPQ5018 chipset.

Combined 7800Mbps Wi-Fi speed over 3 radios: 2.4GHz (574MbpsMbps 11ax 2*2) +5.1GHz (4804Mbps 4*4),5.8GHz (2402Mbps 2*2) equipped 2.5G WAN ,Gigabit LAN ports, support MU-MIMO and DL/UL-OFDMA modulation, faster Ethernet data rate with 320 end users, this multiple users can upload or download multiple packets in 160MHz bandwidth at the same time, narrower subcarrier spacing and longer symbol time, improved the stability and data processing efficiency, publicly to be used in high density access environment such as university campus, concert venue, gymnasium, etc.

FEATURES

- WiFi 6 802.11ax/ac/b/g/n
- 11ax MU-MIMO support, dual band with 7800Mbps data rate, allow 320+end users to access into the networking.
- Support 160MHz bandwidth, faster speed in UL and DL.
- Support Seamless roaming, TWT, OFDM.

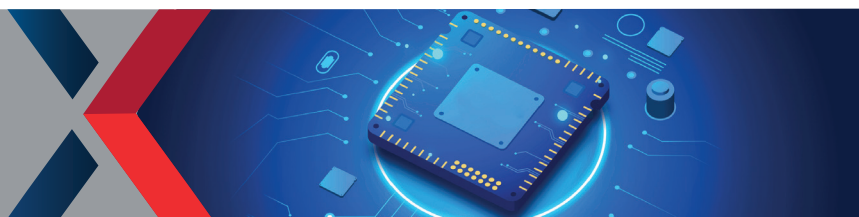


HARDWARE SPECIFICATIONS

SPECIFICATIONS	NX-AP7800-C6
Chipset	IPQ5018+QCN9024+QCN6102+QCA8081
Standard	WiFi 6 802.11ax/ac/b/g/n
Flash	SPI NOR 8MB (1.8v) + NAND 128MB
DDR3L	512MB
2.4G Frequency	2.4GHz - 2.484GHz
2.4G Wi-Fi standard	802.11b/g/n/ax
2*5G Frequency	5.1G and 5.8G
5G Wi-Fi Standard	802.11 a/n/ac/ax



11ax 7800Mbps Ceiling Wireless AP NX-AP7800-C6

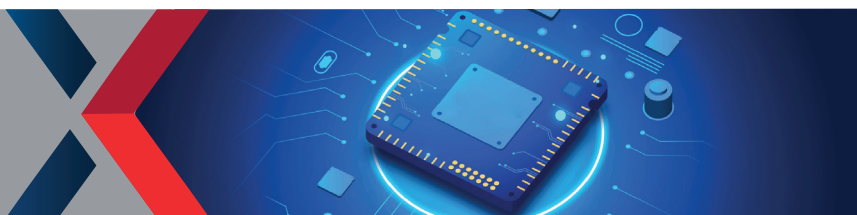


HARDWARE SPECIFICATIONS

SPECIFICATIONS	NX-AP7800-C6				
Interface	1 * 10/100 /1000/2.5G RJ45 WAN Port				
	1 * 10/100 /1000 RJ45 LAN Port				
	1 * Reset button, press 10 seconds to revert to default setting				
Antenna	Build in 6*4dBi dual band MIMO Antenna				
Data Rate	7800Mbps (2.4G 574Mbps, 5.1G				
	4804Mbps,5.8G:2402M)				
End Users	320+				
2.4G RF Power	≤ 22±2dBm				
5.1G RF Power	≤ 22±2dBm				
5.8G RF Power	≤ 22±2dBm				
DC	12V----3A				
PoE	48V (IEEE 802.3at)				
LED light	Sys, WAN, LAN				
Power Consumption	≤ 26W				
Size	Φ218mm×54.6mm				
2.4GHz Power	802.11b	11M	22±2dBm	1M	22±2dBm
	802.11g	54M	19±2dBm	6M	21±2dBm
	802.11n HT20	MCS7	18±2dBm	MCS0	20±2dBm
	802.11n HT40	MCS7	18±2dBm	MCS0	20±2dBm
	802.11ax HE20	MCS11	17±2dBm	MCS0	20±2dBm
	802.11ax HE40	MCS11	17±2dBm	MCS0	20±2dBm
5.1GHz Power	802.11a	54M	19±2dBm	6M	22±2dBm
	802.11n HT20	MCS7	18±2dBm	MCS0	21±2dBm
	802.11n HT40	MCS7	18±2dBm	MCS0	21±2dBm
	802.11ac HT20	MCS7	17±2dBm	MCS0	21±2dBm
	802.11ac HT40	MCS7	17±2dBm	MCS0	21±2dBm
	802.11ac HT80	MCS9	17±2dBm	MCS0	21±2dBm
	802.11ax HE20	MCS11	17±2dBm	MCS0	21±2dBm
	802.11ax HE40	MCS11	17±2dBm	MCS0	21±2dBm
	802.11ax HE80	MCS11	17±2dBm	MCS0	21±2dBm
802.11ax HE160	MCS11	17±2dBm	MCS0	21±2dBm	



11ax 7800Mbps Ceiling Wireless AP NX-AP7800-C6



HARDWARE SPECIFICATIONS

SPECIFICATIONS	NX-AP7800-C6				
5.8GHz Power	802.11a	54M	19±2dBm	6M	22±2dBm
	802.11n HT20	MCS7	18±2dBm	MCS0	21±2dBm
	802.11n HT40	MCS7	18±2dBm	MCS0	21±2dBm
	802.11ac VHT20	MCS9	17±2dBm	MCS0	21±2dBm
	802.11ac VHT40	MCS9	17±2dBm	MCS0	21±2dBm
	802.11ac VHT80	MCS9	17±2dBm	MCS0	21±2dBm
	802.11ax HE20	MCS11	17±2dBm	MCS0	21±2dBm
	802.11ax HE40	MCS11	17±2dBm	MCS0	21±2dBm
	802.11ax HE80	MCS11	17±2dBm	MCS0	21±2dBm
802.11ax HE160	MCS11	17±2dBm	MCS0	21±2dBm	
2.4GHz receiver sensitivity	802.11b	11M	-85dBm	1M	-90dBm
	802.11g	54M	-72dBm	6M	-90dBm
	802.11n HT20	MCS7	-70dBm	MCS0	-87dBm
	802.11n HT40	MCS7	-68dBm	MCS0	-85dBm
	802.11ax HE20	MCS11	-60dBm	MCS0	-83dBm
	802.11ax HE40	MCS11	-56dBm	MCS0	-83dBm
5.1GHz receiver sensitivity	802.11a	54M	-72dBm	6M	-92dBm
	802.11n HT20	MCS7	-70dBm	MCS0	-90dBm
	802.11n HT40	MCS7	-68dBm	MCS0	-88dBm
	802.11ac VHT20	MCS8	-70dBm	MCS0	-88dBm
	802.11ac VHT40	MCS9	-68dBm	MCS0	-88dBm
	802.11ac VHT80	MCS9	-58dBm	MCS0	-85dBm
	802.11ax HE20	MCS11	-62dBm	MCS0	-88dBm
	802.11ax HE40	MCS11	-58dBm	MCS0	-86dBm
	802.11ax HE80	MCS11	-55dBm	MCS0	-84dBm
	802.11ax HE160	MCS11	-51dBm	MCS0	-82dBm
5.8GHz receiver sensitivity	802.11a	54M	-72dBm	6M	-92dBm
	802.11n HT20	MCS7	-70dBm	MCS0	-90dBm
	802.11n HT40	MCS7	-68dBm	MCS0	-88dBm
	802.11ac VHT20	MCS8	-70dBm	MCS0	-88dBm
	802.11ac VHT40	MCS9	-68dBm	MCS0	-88dBm
	802.11ac VHT80	MCS9	-58dBm	MCS0	-85dBm
	802.11ax HE20	MCS11	-62dBm	MCS0	-88dBm
	802.11ax HE40	MCS11	-58dBm	MCS0	-86dBm
	802.11ax HE80	MCS11	-55dBm	MCS0	-84dBm
	802.11ax HE160	MCS11	-51dBm	MCS0	-82dBm
2.4GHz EVM	802.11b:≤-10 dB ; 802.11g: ≤-25 dB ; 802.11n:≤-28 dB ; 802.11ax:≤-35 dB				
5GHz EVM	802.11a:≤-25 dB ; 802.11n: ≤-28 dB ; 802.11ac:≤-32 dB ; 802.11ax:≤-35 dB				



11ax 7800Mbps Ceiling Wireless AP NX-AP7800-C6

FIRMWARE SPECIFICATIONS

SPECIFICATIONS	NX-AP7800-C6
Working Mode	Gateway, AP
Wireless Functions	Multiple SSID functions: 2.4GHz: 4; 5.8GHz: 4
	Support SSID hidden
	Support seamless roaming, 802.11kvr standard
	Support 5G Prior for a faster Ethernet.
	Wireless Security: Open, WPA, WPA2PSK_TKIPAES, WAP2_EAP, WPA3
	Support MAC filter
	Support Wi-Fi time on/off to save energy
	Support client isolation to improve the wireless stability
	Support RF power adjustable, adjust the RF power based on environment.
Support user quantity limited, Max 64 users to access each band.	
Networking Function	VLAN settings
	Cloud access support in gateway mode
Device Management	Back-up the configuration
	Restore the configuration
	Reset to factory default
	Reboot the device: including time reboot or reboot immediately
	Admin management password modify
	Firmware upgrade
	System log
Support firmware GUI web management, AC controller management, remote management and cloud management	
Protocols	IPv4

USA

Tel +1 877 677 4040
info@nodexon.com
152 East 118th Street,
New York, NY 10035

EUROPE

Tel +44 746 6717286
uk@nodexon.com
Fairbourne Drive, Atterbury,
Buckinghamshire, UK

MIDDLE EAST

Tel +971 44 558570
mena@nodexon.com
Boulevard Plaza Tower One, Level 3,
Downtown Dubai, UAE

