



NX-AP6650-C5
Indoor Access Point Switch
Product Guide



1. Product introduction

NX-AP6650-C5 is designed for high-performance, high-capacity wireless access points for wireless coverage. It is suitable for WIFI coverage in medium and large hotels, large and medium-sized hotels, bars, cafes and other places. The NX-AP6650-C5 can work in the 2.4GHz and 5G bands at the same time, and the wireless rate can reach 1200Mbps. The product has 4 high-gain omnidirectional antennas, which have strong WIFI signal penetration and coverage, and the WIFI signal has no dead angle. The device uses 128M of large memory a maximum of 120 client connections. The equipment is based on a ceiling-mounted design that is aesthetically pleasing and has built-in ceiling mount fittings that can be mounted directly to the wall and ceiling. Supports standard PoE (802.3af/at) power supply, and the networking is convenient and fast.

1.1 Description of each interface

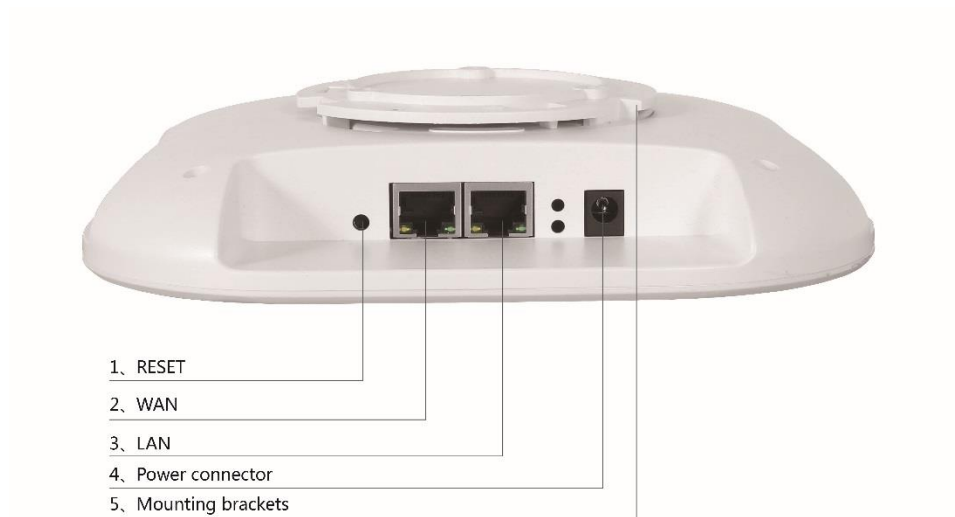
NX-AP6650-C5 the description of each interface is as follows.



System indicator status

Indicator	Status	Description
	On	The indicator light is always on during system startup.

System indicator	Blink	The system works normally
	Off	The system is not working properly
2.4G indicator	Blink	2.4G Wireless connection is normal
	On	2.4G Wireless works normally
	Off	2.4G Wireless works is abnormal or not connected
5G indicator	Blink	5G Wireless connection is normal
	On	5G Wireless works normally
	Off	5G Wireless works is abnormal or not connected



1. RESET button, long press for 5-10 seconds to achieve system reset.
2. WAN port, connects to the POE switch, Realize communication and power supply with the external network.
3. LAN port, 10/100M Ethernet interface for connecting to a computer or connecting other APs.
4. DC power port, the maximum external power supply voltage is 12V.
5. Simplify the installation as long as you need to fix the mounting bracket to the wall or ceiling and then snap the product in.

1.2 List of items

NX-AP6650-C5 device 1pcs;

Warranty card 1pcs;

User manual 1pcs;

Fixed Accessories

2. Product installation

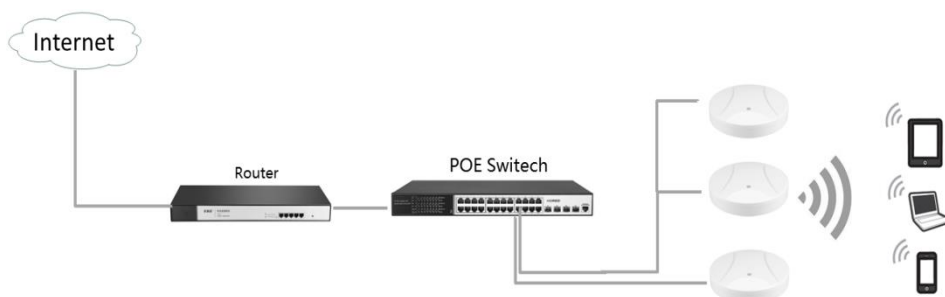
2.1 Installation Environment

Please read the following precautions carefully before installing the device to avoid personal injury or equipment damage. This precaution cannot cover all possible risks.

- ◆ Please ensure that the floor of the installation site is level and dry, and take necessary anti-slip measures to ensure the personal safety of the installer;
- ◆ Make sure that the equipment is installed in a location where has no water or dripping, and don't install the equipment in a humid environment
- ◆ To reduce the risk of electric shock, don't open the case while the device is working, even if it is not charged, don't open it by yourself.
- ◆ Please keep the equipment clean and has no dust;
- ◆ Before cleaning the equipment, It should be powered off. Please wipe the equipment with dry fabric and don't use liquid to clean.

2.3 Network Topology

1. When the wireless network size is small, the user can directly log in to the AP's web management interface to set the wireless function, manage the wireless client in the network, and set the network parameters of the AP.



-
2. When the wireless network size is large, if manage separately each AP in the network, the network management work will be cumbersome and complicated. At this time, suggest users to build a FengrunDa Wireless Controller (AC) product in the network, and the wireless controller uniformly manages all APs in the network.

2.4 Configuration Guide

Step 1 Equipment Inspection

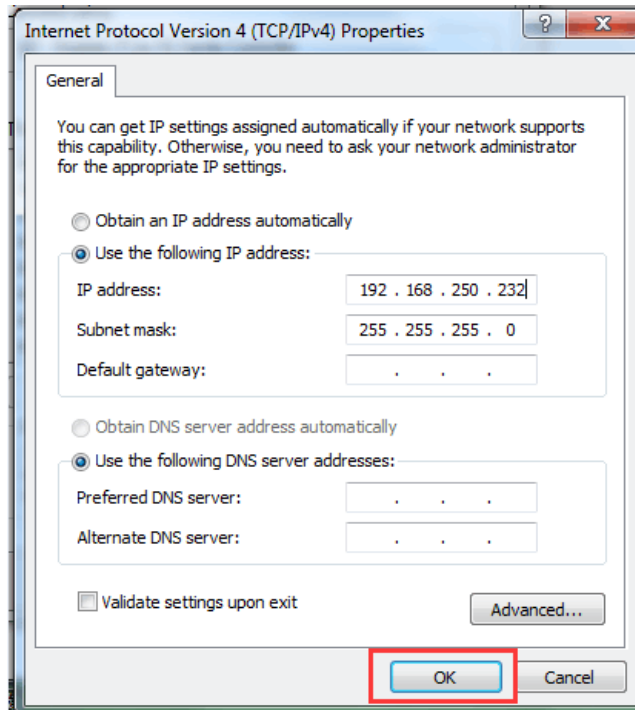
Before configuring the device, connect the device to the power supply to check whether it works properly.

The AP is powered by IEEE 802.3af/at standard PoE. The other end of the network cable connected to the AP needs to be connected to a device with PoE power supply, such as PoE switch. as the picture shows

After the power on, the AP will automatically initialize. At this time, the system indicator is always on. After the initialization is complete, it will flash for 2 seconds. When the system indicator is steady on again, the device is working normally.

Step 2

Manually change the IP address to 192.168.250.X (X is 2~254), and the subnet mask is 255.255.255.0

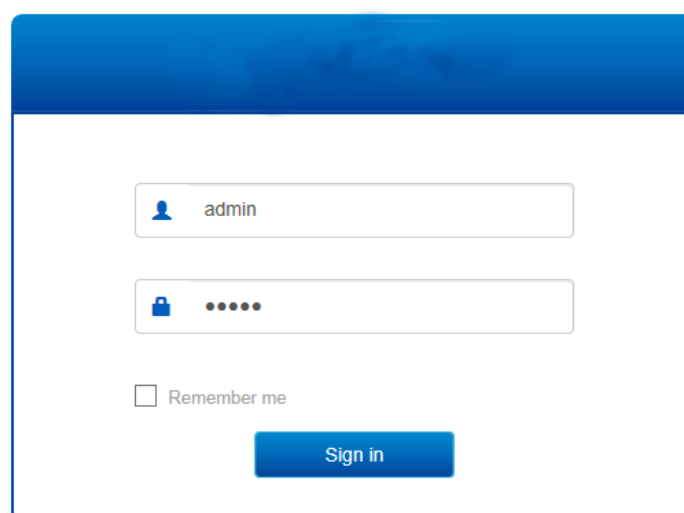


Step 3

Open the browser on the computer, enter 192.168.250.1 in the address box and hit ENTER

Step 4

Enter into web management log interface, Enter the default username and password admin in the username and password fields, then click

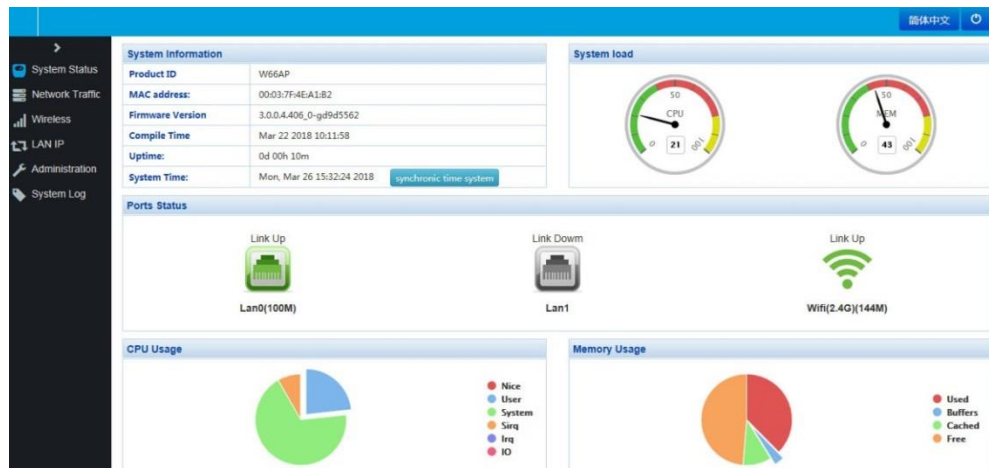


Login.

Step 5

You have entered the web management interface of the switch and can

start to configure the AP.



Product Specifications

Working frequency	2.4GHz 5GHz
Wireless rate	1200Mbps
Installation method	Ceiling/wall mounting
Size	189mm*189mm*38mm
Port	2*10/100M RJ45 Ports
	1*DC Port
Indicator	1 *System indicator
	1 *2.4G indicator
	1*5G indicator
Service indicator	Turnable indicator
Antenna	Built-in antenna
Button	1*Reset Button
Power supply	802.3af Standard PoE power supply
	12VDC power supply (without power adapter)

Maximum machine power consumption	9W
Management	Wireless Controller (AC) unified management
	Independent web page tube, Telnet
SSID Quantity	16
SSID VLAN	Support
Chinese SSID	Support
Wireless function	SSID Broadcast: Support
	Wireless encryption: WPA、WPA2、WPA-PSK、WPA2-PSK
	User isolation: isolation between wireless networks, internal isolation of APs
	Wireless MAC address filtering: Support
	Wireless client limit: support
	Eliminate weak signal devices and prohibit weak signal devices from accessing: support
System Management	Equipment Management: All Chinese WEB Management
	System log: support
	Factory reset: support
	Backup configuration: support
	Import configuration: support
	Software upgrade: support
Use environment	Watchdog: Support
	Operating temperature: 0°C ~ 40°C
	Working humidity: 10%~90%RH without condensation
	Storage temperature: -40°C ~ 70°C
	Storage humidity: 5%~90%RH without condensation

Obtaining Technical Assistance

Website:<https://www.nodexon.com/>

Technical Support Website:<https://nodexon.com/support>

Community:<http://www.nodexon.com/community>

Technical Support Email:support@nodexon.com

Case Portal :<https://www.nodexon.com/caseportal>

Website:<https://www.nodexon.com/>